

Izabel Lam Dinnerware, Lighting And Sculptures

Modern and timeless glass and porcelain dinnerware. Hand painted glass panels and steel sculptures for residential and commercial installations.

FOR IMMEDIATE RELEASE November 16, 2013

Izabel Lam is renowned for her original designs in glass / porcelain dinnerware and tabletop accessories for the hospitality industry. Her tableware have become the signature of fine dining and are also used as highlights in casual dining.

Her designs are always at the forefront.

She is the first to introduce glass plates, dishes, bowls and cups to the hospitality trade, bringing her creativity in texture, shape, form and color to an otherwise traditional arena. Izabel's glass dinnerware has now become one of the staple elements in all modern restaurants. She then brought her ingenuity to porcelain dinnerware to compliment her glass, adding another dimension and contrast to the tablecape in the dining experience.

Izabel strives to innovate modern designs using age old methods, marrying creativity and commerce to provide canvases for the presentation of imaginative cuisine.

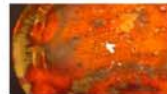
The premiere of Izabel Lam's lighting panels and steel sculptures at the Boutique Design Show, New York have been extremely well received by interior designers and architects alike

Using the same technique for her successful glass dinnerware series, she has designed hand painted panels which can be used as back litwall coverings for reception areas, back wall for bars and restaurants, room dividers and seating dividers. Other applications can be for individual lights, buffet platters and the tops of tables in the lounge area. These can also be used in VIP suites bringing drama and ambient lighting to create a cosy atmosphere and lasting impression. The glass panels are hand painted with the color pigments and then fired so it is imbedded onto the surface. Resulting in each piece being unique and individual - the back light brings out spectacular brilliance and nuances of each shade and color. Patterns and colors can be customized to create a series that is similar to each other.

Click on the image to the right and browse throught our display of these panels



And on the images to the left to see a selection of her hand painted glass dinner plates custom made for well known chefs



Her metal sculptures are intricately worked and inspired by the constant movement of the sea from her scuba diving journeys. They lure you in the imagination of her undersea encounters.



*'The Anemone' - Sculpture of steel, copper wire and nickel plated
Inspired by the anemone under the sea
It moves and mesmerizes*

Contact

IZABEL LAM NEW YORK, 175 VAN DYKE STREET, BROOKLYN, NY 11231

T + 7187973983 E info@izabellam.com

<http://www.izabellamdinnerware.com> <http://www.izabellam.com>